

TRIANGOLO ALOGENO 4631 300W R7sIP65   

230-250 V 50-60 Hz

Class I

goccia
ILLUM NAZIONE

Impact test: 6 joules

Electromagnetic compatibility CEE 89/336 - EN 55015 III Ed. - EN 61000 - 3 - 2

Definition and application**Aluminium filleted triangular weatherproof fixture with square aluminium frame, opal glass and articulated bracket.**

To be installed on wall over entrance of shops, homes, buildings.

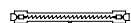
Lighting source

300W R7s lampholder

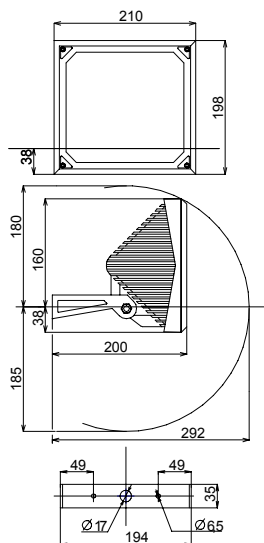
Illuminance level: **5000** LumenLife: **2000** hTonality: **2700°K** warmDescription

Housing in die-cast aluminium with back cable box in black polycarbonate, on silicone gasket.

External frame in die-cast aluminium.



300W R7s



Flat opal glass diffuser.

Gasket: Silicone antiaging rubber

Terminal block: O. Körner 4153317 3 poles

Reflector: polished 99,5 aluminium

Lampholder: Vossloh 400565.01

FinishPickling, phosphochrome, polyester powder coating, UV resistant
+ (only silver) transparent coating UV resistantPhotometryEfficiency $\mu = 62\%$

The diagram of illuminance is round and central.

The polished reflector multiplies illuminance level.

Be careful to install the fitting in position not to be dazzled by the light.

Illumination calculation of your projects on require.

Installation:

Two fixing holes in the fixing steel bracket, galvanized.

Cable entry through the back cable box. PG11 and IP 68 cable gland

